

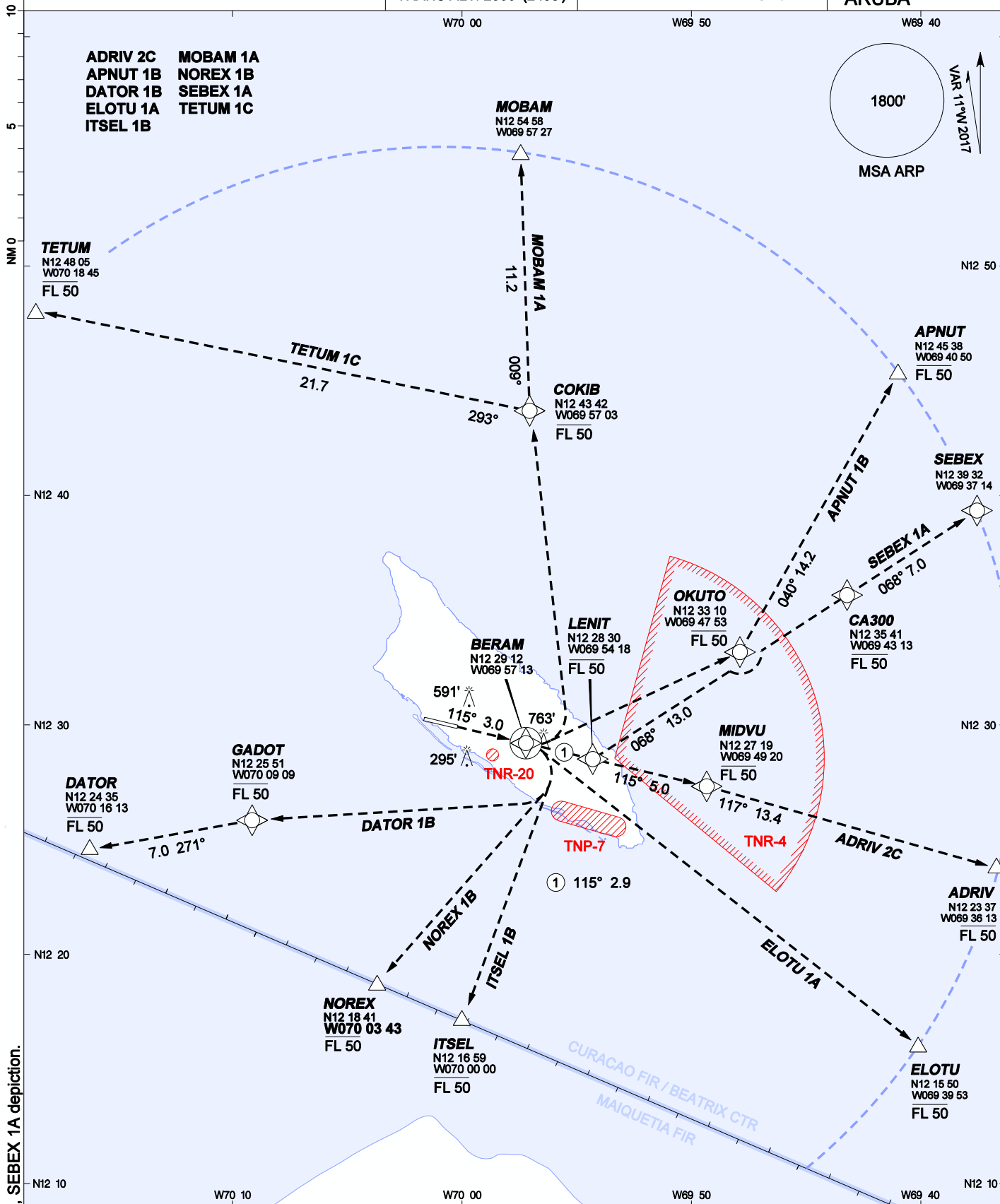
AIP DUTCH CARIBBEAN

RNAV (GNSS) DEPARTURES RWY 11  
INSTRUMENT - ICAO

AD ELEVATION: 62'  
TRANS LEVEL: FL 40  
TRANS ALT: 2500' (2438')

BEATRIX:  
APP/TWR 120.9 GND 118.0  
APRON 121.6 ATIS 132.1

REINA BEATRIX  
INT'L (TNCA)  
ARUBA



CHANGES: ADRIV 2C route, SEBEX 1A depiction.

1. RNP-1 or RNAV-1 required.
2. Climb on runway course 115° to BERAM. Follow assigned route.
3. All departure routes: minimum 235 fpm until 800'.
4. Rwy 11 DER to TNR-4 6.8 nm. Advise ATC if unable to climb above NOTAMed ceiling prior to crossing boundary.
5. Rwy 11 DER to TNP-7 oil refinery 5.0 nm, requiring 490 fpm to reach 2500' at TNP-7 boundary.

- TNP-7 ground - 2500'
- TNR-4 SFC - by Notam
- TNR-20 ground - 2500'
- Fly-by on demand reporting
- Fly over on demand reporting